

50TH LINCOLN

INSPIRED URBAN TOWNHOMES



50th + Lincoln is an inspired development of urban townhomes with elegant exteriors, open and serene interiors, designed with a focus on sustainability and an active + fluid lifestyle. 50th + Lincoln is located in one of Portland's most creative, engaged districts. A hub for food, galleries, design, and the outdoors, the Mt. Tabor neighborhood is home to a 190 acre city park, and adjacent to the Hawthorne and Division areas - both landmarks for creatives, artists, and chefs from around the world.

FLOORPLAN UNITS 11-18



3 BED



3.5 BATH



GARAGE



BALCONY

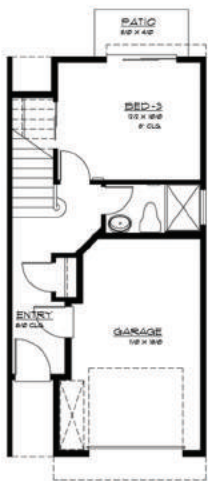


PATIO

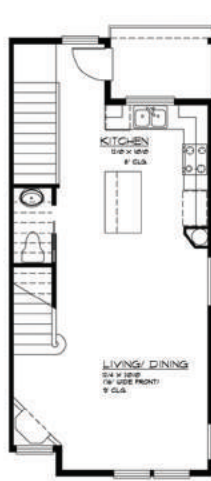


GAS FIREPLACE

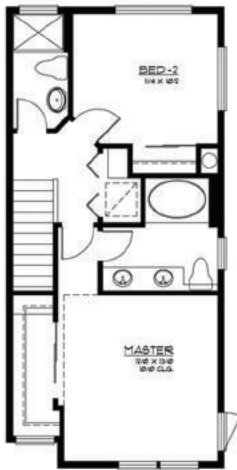
LEVEL 1



LEVEL 2



LEVEL 3



EXTERIOR

- modern + elegant exterior palette
- full size tuck-under garage with glass doors and central courtyard access
- lush Northwest landscaping + dusk to dawn lighting
- inviting, sustainably sourced wood entry
- each townhome features an exterior deck
- floor to ceiling energy efficient windows
- private entry for each unit

INTERIOR

- urban concrete floors on the main
- solid white oak floors throughout the 2nd and 3rd levels
- bathroom on each level with simple and tasteful finishes
- large master bedroom with 10 ft ceilings
- deep soaking tub in master bathroom
- locally made, environmentally friendly, custom designed cabinetry
- modern + efficient gas fireplace in the living room
- eat-in bar and dedicated dining area
- chef's kitchen with gas range and quartz surface countertops
- tall ceilings
- low VOC paint

MECHANICALS

- 95.5% energy efficient furnace
- air conditioning
- equipped for high speed internet
- energy efficient appliance
- energy star rated washer and dryer

FINISHES

- White oak hardwood flooring
- White zen quartz counter tops



Let's talk leasing! 503-449-6009 | www.50thandlincoln.com